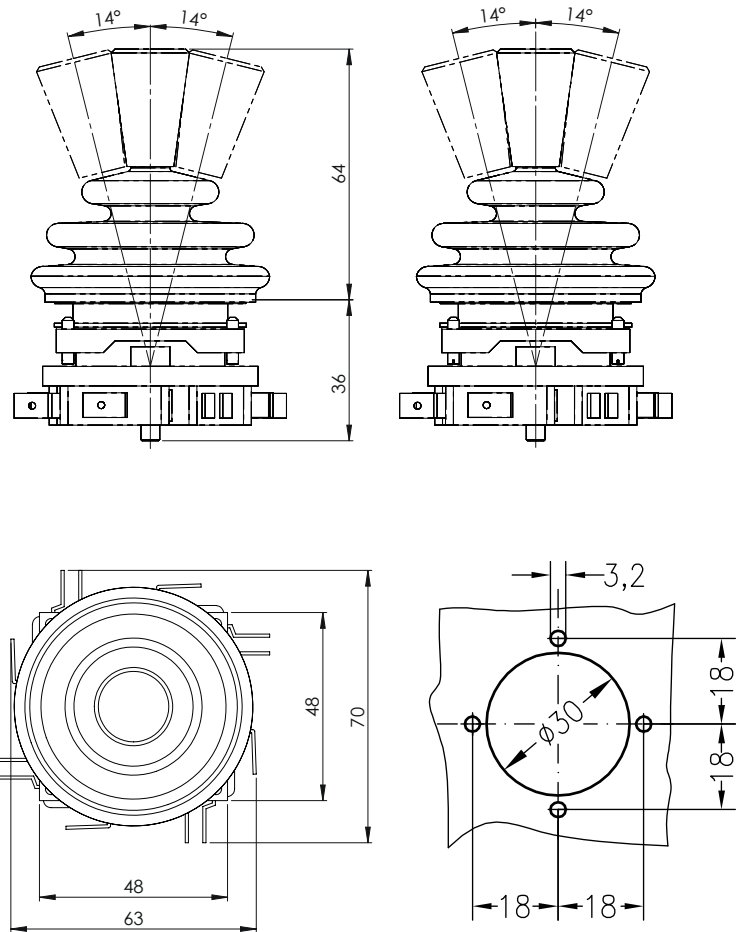
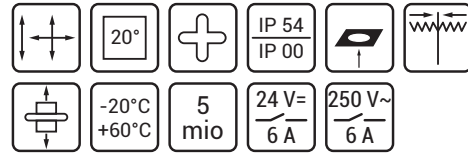


M0N-W

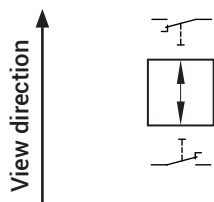
Small installation depth.



The joystick M0N-W is due to its small installation depth ideal for installation in casings with low height. Despite its compact design it comes with a 1- or 2-axis version with spring return. Its body, made of durable plastic, serves as a carrier for the microswitches with flat plug connectors. For each switching direction, one or two microswitches are fitted with one change-over contact each. Thus, both single-pole (W) as well as two-pole switching functions (2W) can be realized.

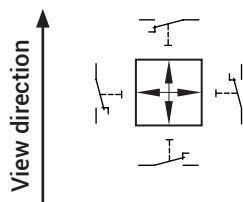
The version 2SW offers sequentially switching contacts in single pole version. The hollow lever, made of metal for reasons of stability, allows the construction of a handle with pushbutton. For applications with specific switching functions the joystick can be equipped with a cross or special gate. As a control switch for auxiliary functions it is, due to its low weight, ideally suited for installation in portable consoles as well as in fixed operating stations.

Drive E, 1 step
per axis 1 changer



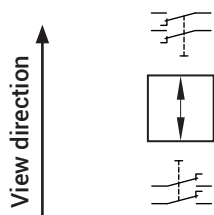
M0N 6 ER W

Drive V, 1 step
per axis 1 changer



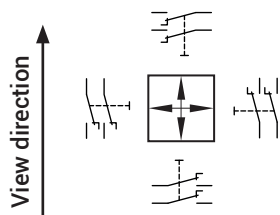
M0N 6 VR W.W

Drive E, 1 step
per axis 2 changer



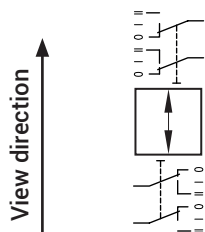
M0N 6 ER 2W

Drive V, 1 step
per axis 2 changer



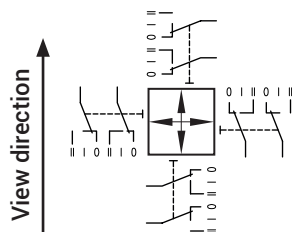
M0N 6 VR 2W.2W

Drive E, 2 step



M0N 6 ER 2SW

Drive V, 2 step



M0N 6 VR 2SW.2SW

Scope of supply, type code

Scope of supply M0N-W, -2W, -2SW:

- Handle G49 (without inserts)
- Rubber boot 60 mm
- Spring return
- Microswitch with flat plug connection

Handles:

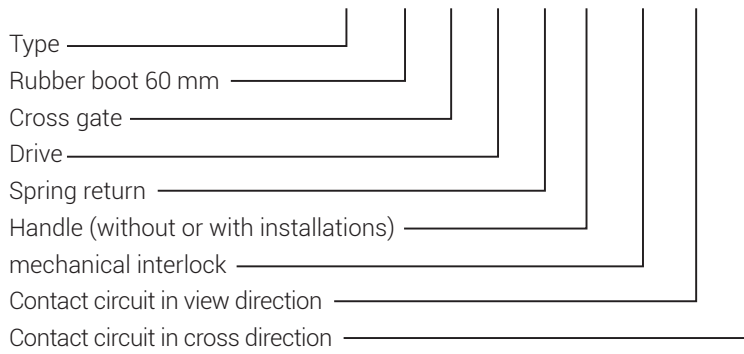
Fitting in handle

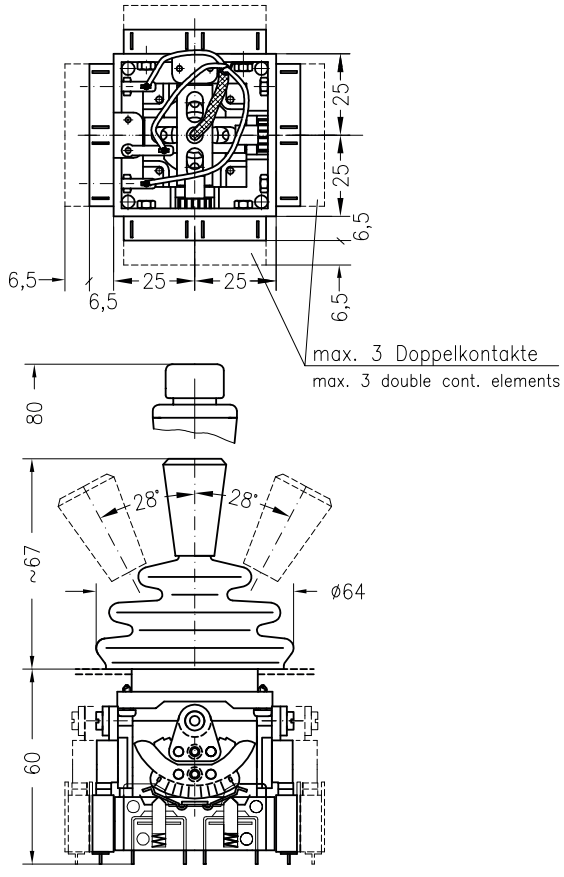
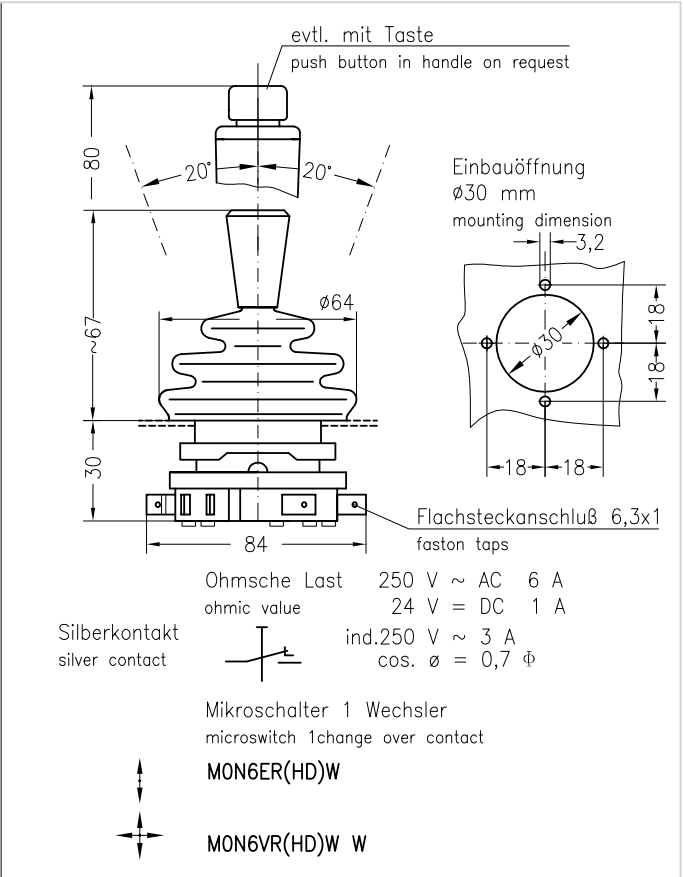
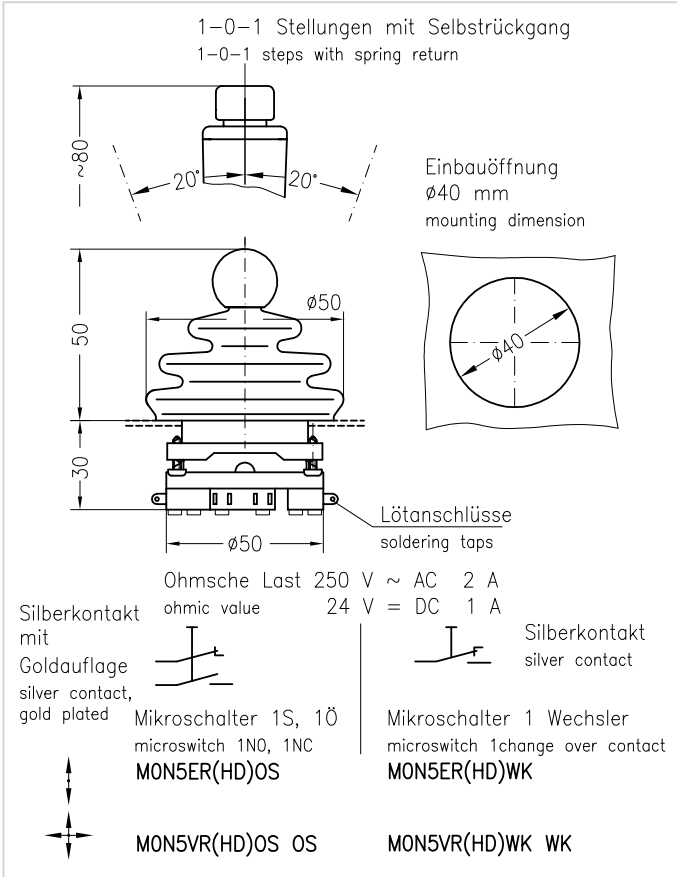
see sheet G-M054

- Cross gate KK
- Mechanical interlock Z
- Ball handle KG
- Wiring to connection cable or plug

Type code:

						G49		2W	2W
			E			HDS		2SW.	2SW
	M0N	6	KK	V	R	HDU	Z	W.	W.





max. 5-0-5 Stellungen
mit oder ohne Selbstrückgang
5-0-5 steps

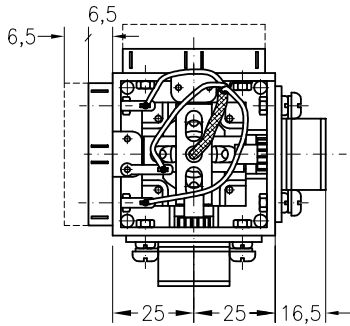
zwangsbetätigte Tastkontakte mit
Goldauflage oder Silberauflage
force actuated goldcontacts or
silvercontacts

Typ
GMON6E...
SMON6E...

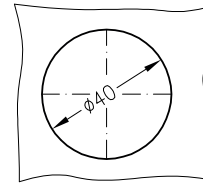
GMON6V...
SMON6V...

Gewicht ~ 0,1 kg
weight ~ 0,1 kg



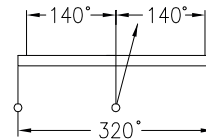


Einbauöffnung
 $\phi 40$ mm
 mounting dimension



evtl. mit Impedanzwandler 4–20 mA
 potentiometer – conductiv plastic

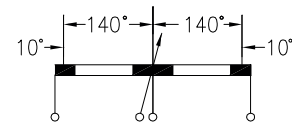
Potentiometer ohne Mittelanzapfung
 potentiometer without centre tap



Leitplastik
 conductivplastic
 1 kOhm Typ : B1
 5 kOhm : B5
 10 kOhm : B10

Achtung Schleiferbelastung max. 1 mA
 warning: wiper current max. 1 mA

Potentiometer mit Mittelanzapfung und Kurzschlußstrecken
 potentiometer with centre tap and short circuit path

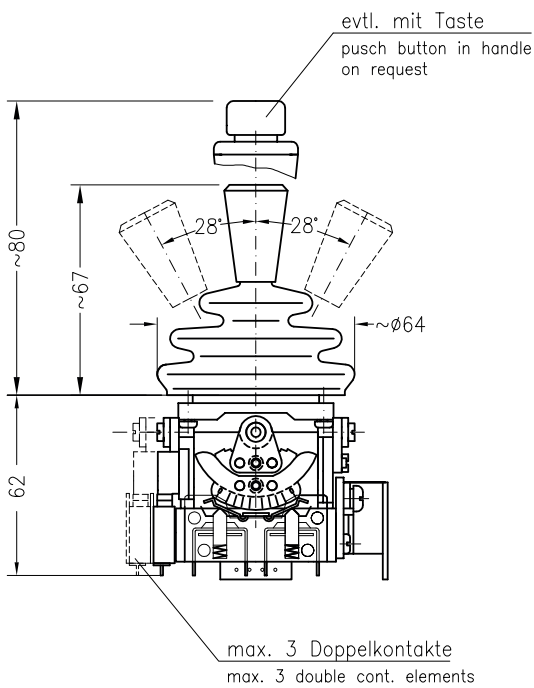


Leitplastik
 conductiv plastic
 5–0–5 kOhm Typ: B55
 10–0–10 kOhm Typ: B1010

Achtung: Schleiferbelastung max. 1 mA
 warning: wiper current max. 1 mA

Drahtgewickelte Potentiometer – 2 Watt
 potentiometer wire wound – 2 Watt
 PD 200 1–0–1 kOhm
 5–0–5 kOhm
 10–0–10 kOhm

Andere Potentiometer und Ohmwerte,
 bzw. Spannungs- oder Stromausgang
 auf Anfrage
 other potentiometer or ohmic value
 on request



Typ: SMON6ER--B
 GMON6ER--B

Gewicht: 0,16 kg
 weight: 0,16 kg

Schaltung
 circuit

Potentiometertyp
 potentiometertype



SMON6VR--B--B--
 GMON6VR--B--B--

Gewicht: 0,2 kg
 weight: 0,2 kg