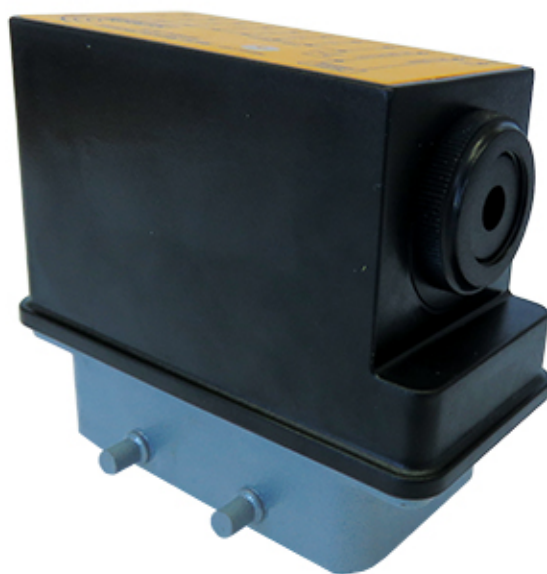


RECEIVER

# RX MFS

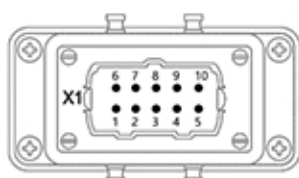
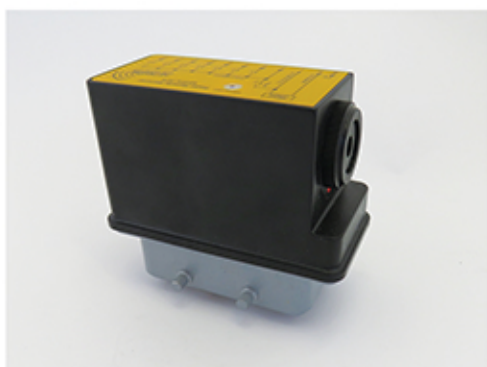
## AC8 / AC16 2.4GHz



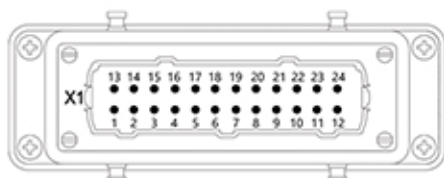
# TECHNICAL SALES SHEET

## Receiver Type: RX MFS AC8R / AC16R 2.4GHz

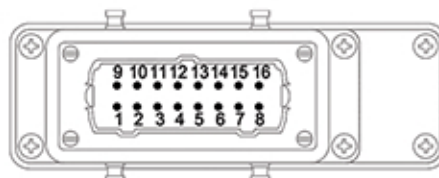
- **Housing:**  
Impact resistant polymer composite
- **Weight: AC8R / AC16R**  
290 g 0.6 lbs, 482 g 1,06 lbs
- **Dimensions: AC8 / AC16**  
Length: 98 mm, (3.9 in)    144 mm, (5.7 in)  
Height: 56 mm, (2.2 in)    56 mm, (2.2 in)  
Depth: 85 mm, (3.4 in)    94 mm, (3.7 in)
- **Antenna:**  
Internal
- **Power Supply:**  
48 VAC - 230 VAC single phase (40-260 V AC 50/60 Hz)
- **LED Diagnostics:**  
Power/operation/internal, transmission reception,  
Main Contact (MC) error, memory error
- **Outputs:**  
RX MFS AC8R:  
7 Relays, N.O. or N.C. outputs  
2 Main Contact Relays (N.O., redundant)
- **RX MFS AC16R:**  
15 Relays, N.O. or N.C. outputs  
2 Main Contact Relays (N.O., redundant)
- **Input:**  
RX MFS AC16R:  
Two programmable and scalable inputs 0(4)-20 mA  
Serial interface RS485 for customized solutions
- **Frequency:**  
2.4 GHz
- **Typical Operating Range:**  
Approximately 70 m (230 ft) line of sight
- **Safety:**  
Active and passive Stop function Address  
Parity & Checksum  
Safety Category SIL 3, PLd
- **Operating Temperature Range:**  
-25°C to +70°C (-13°F to +158°F)
- **Storage Temperature Range:**  
-40°C to +85°C (-40°F to +185°F)
- **Humidity Range:**  
0-97% maximum non-condensing
- **Response Time:**  
Less than 100 msec.
- **Horn:**  
Loud 90 dB Frequency 3.5 KHz



RX-MFSL AC8



RX-MFSL AC16 24p.



RX-MFSL AC16 16p.