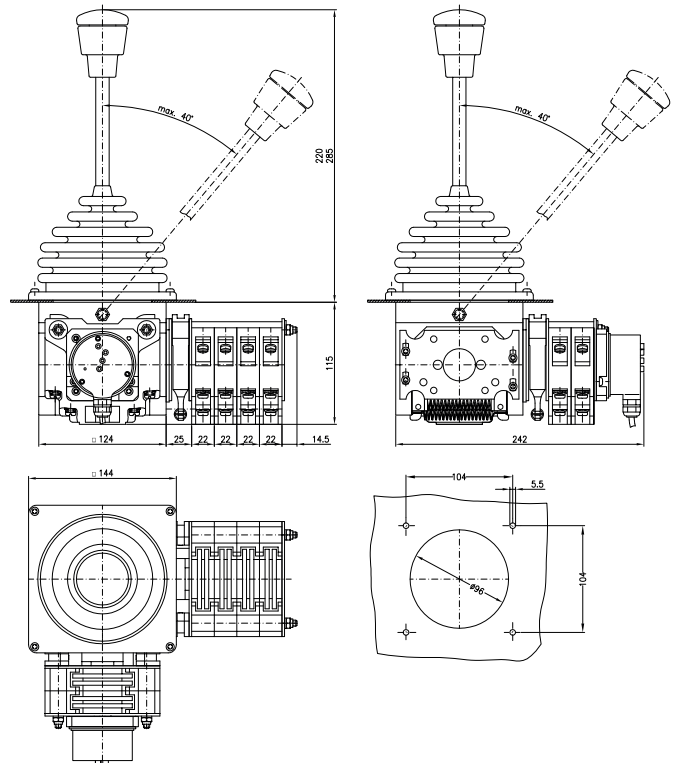
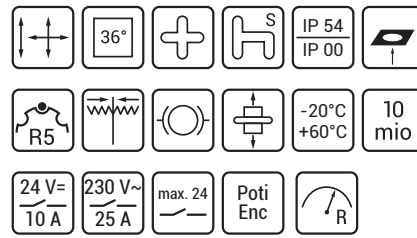


VNS2

Convincing technology for tough conditions.



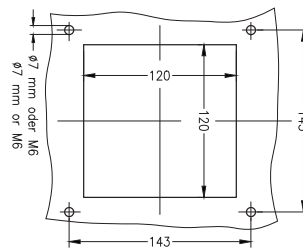
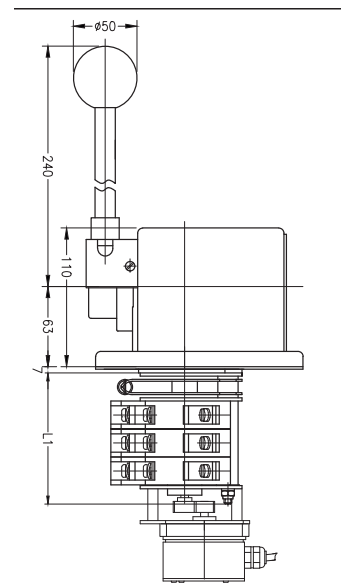
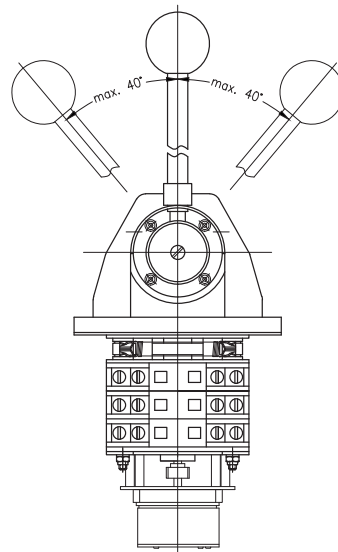
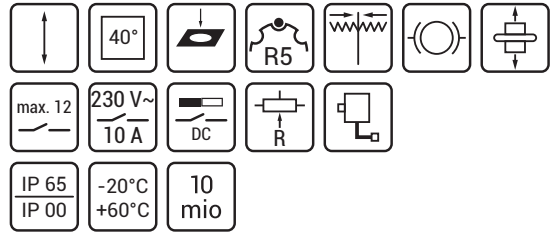
Our VNS2 is the big brother of our proven pioneer VNS0. It was developed especially for tough mechanical and environmental operating conditions. The VNS2 is available in single or dual-axis version or in combination with special handles as 3-axis version. The intelligent modular system permits the mounting of contact blocks in X, Y or Z direction, each with up to 12 double contact elements. Milled cams, programmed from our standard portfolio or customized, control the

powerful DC, AC or gold contacts.

Of course, the joystick can be completed with encoders, potentiometers or handles from our huge range of products. The 12 mm hollow lever of special alloy, an aluminium escutcheon plate, metal gears and a casted drive block contribute to the steel plant operators and crane manufacturers estimated robustness and durability.

NS2-KA

For extreme environmental requirements.



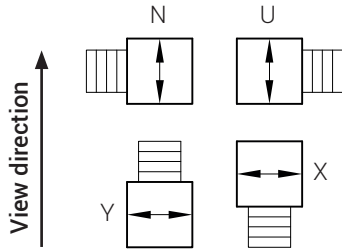
The NS2-KA with an aluminum upper part, lever and drive shaft made of high-quality stainless steel as well as a shaft seal was developed with the demand of permanently ensuring a high front IP protection class.

The modular contact block is equipped with exchangeable double contact elements and allows switching with a maximum of 5-0-5 positions and the attachment of potentiometers and absolute encoders.

The contacts are embedded in double contact elements and are available in silver, gold-plated silver or with blow magnets for DC applications. The execution of the contact circuit is in accordance with Spobu standard circuits or according to customized specifications. Together with notching discs made of metal from the Spobu standard program or in customized design, flanged potentiometers or encoders, these switches solve control tasks reliably under heavy duty conditions on ships, drilling rigs and steel mills.

Drives with 1- or 2-axis:

Drive E
Arrangement N, U, Y, X

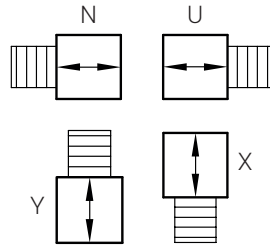


VNS2-F

N
U
Y
X

 -AK E

Drive G
Arrangement N, U, Y, X

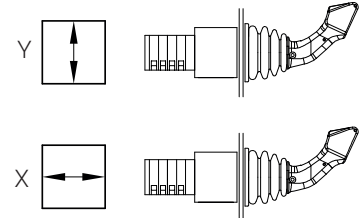


VNS2-F

N
U
Y
X

 -AK G

Drive A
Arrangement Y, X

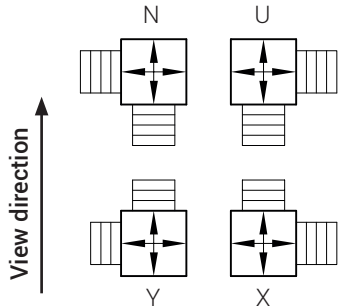


VNS2-F

Y
X

 -AK A

Drive V
Arrangement N, U, Y, X

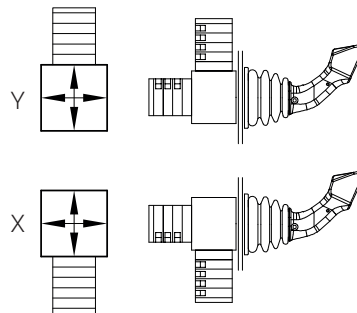


VNS2-F

N
U
Y
X

 -AK V

Drive EA
Arrangement Y, X

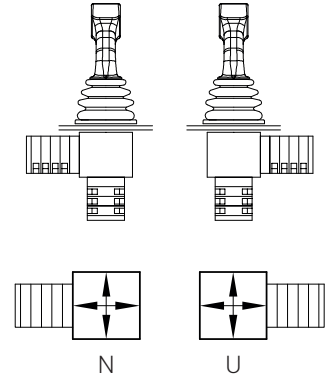


VNS2-F

Y
X

 -AK EA

Drive EA
Arrangement N, U

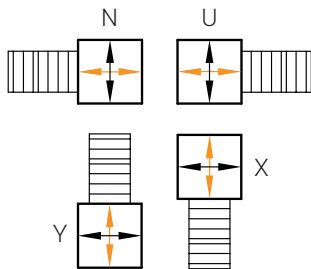


VNS2-F

N
U

 -AK EA

Drive H
Arrangement N, U, Y, X



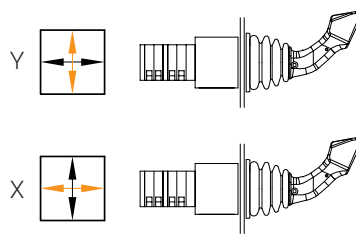
Potentiometer and encoder coupling only for colour-coded axis

VNS2-F

N
U
Y
X

 -AK H

Drive AA
Arrangement Y, X



Potentiometer and encoder coupling only for colour-coded axis

VNS2-F

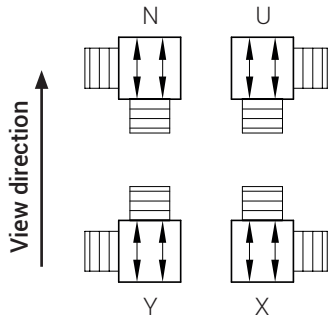
Y
X

 -AK AA

Drives with 2 levers:

Drive GGV

Arrangement N, U, Y, X



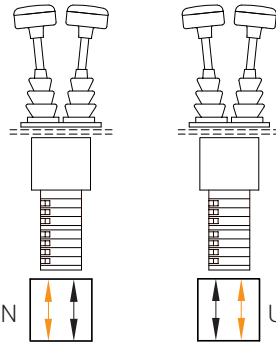
VNS2-F

N
U
Y
X

 -GGV

Drive GGAA

Arrangement N, U



Potentiometer and encoder coupling only for colour-coded axis

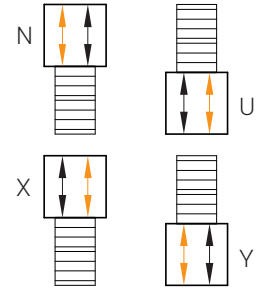
VNS2-F

N
U

 -GGAA

Drive GGH

Arrangement N, U, Y, X



Potentiometer and encoder coupling only for colour-coded axis

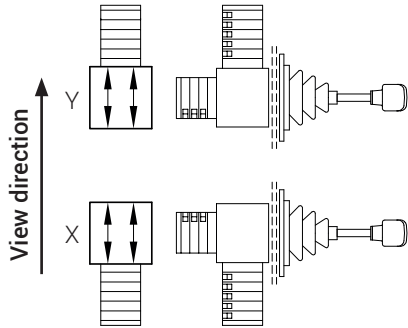
VNS2-F

N
U
Y
X

 -GGH

Drive GGEA

Arrangement Y, X



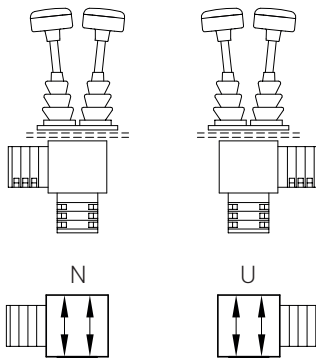
VNS2-F

Y
X

 -GGEA

Drive GGEA

Arrangement N, U



VNS2-F

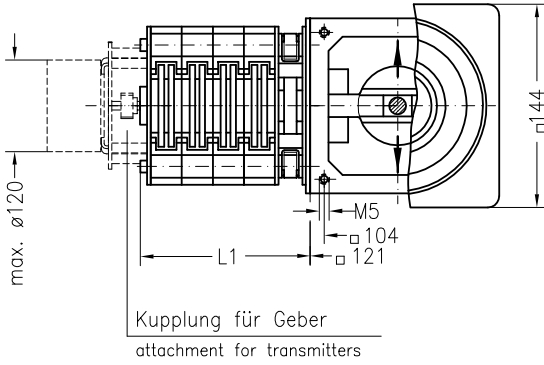
N
U

 -GGEA

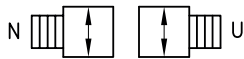
Note GG drives:

G1 only with lever length 180, 200, 220 and 280 mm,
G13 only with lever length 160, 180, 200, 220 and 280 mm

Typ **VNS2-F-E** Antrieb E siehe Seite J-VNS2-2/3
 type drive E see sheet J-VNS2-2/3

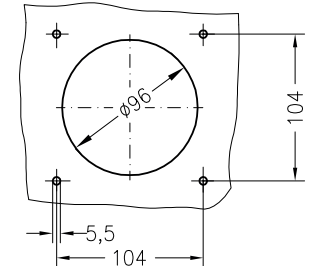
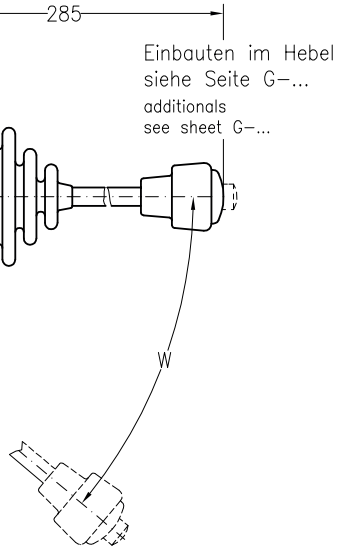


Anordnung arrangement

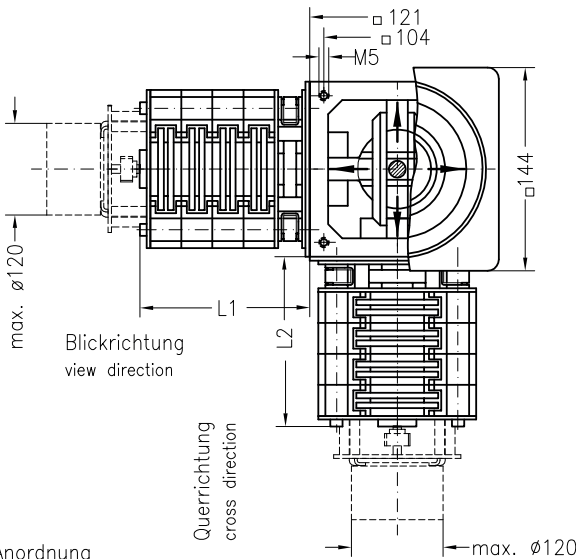


Gewicht:
 Antriebsblock ~2,8 kg
 je Doppelkontakt ~0,4 kg
 weight:
 drive ~2,8 kg
 each double contact ~0,4 kg

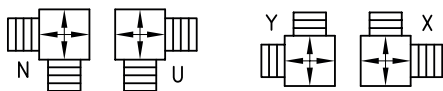
Bohrungen in der Befestigungswand mounting dimensions



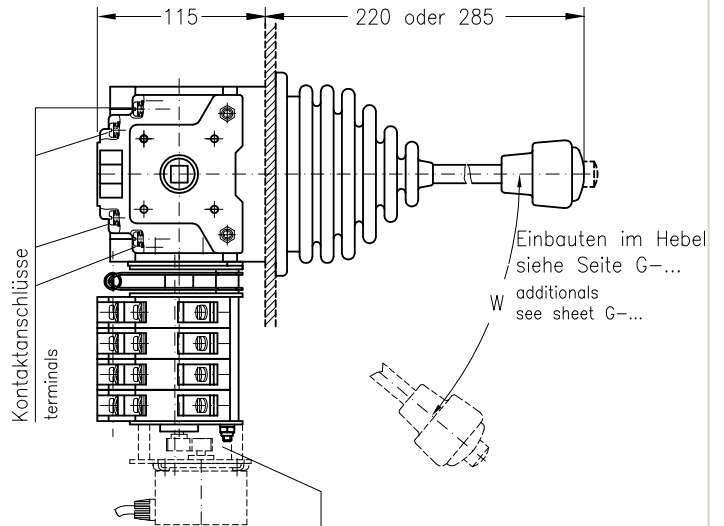
Typ **VNS2--F-V** Antrieb V siehe Seite J-VNS2-2/3
 type drive V see sheet J-VNS2-2/3



Anordnung arrangement



Gewicht:
 Antriebsblock ~3 kg
 je Doppelkontakt ~0,4 kg
 weight:
 drive ~3 kg
 each double contact ~0,4 kg

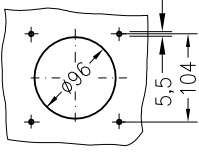


Kupplung für Geber attachment for transmitters

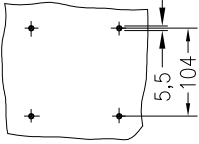
Stellungen	W
1-0-1	20°
2-0-2	20°
3-0-3	30°
4-0-4	33°
5-0-5	30°
6-0-6	35°

Maß L1 oder L2 dimension L1 or L2	58	80	102	124	146	168	190	212	234	256
Anzahl Doppelkontakte number of double contacts	1	2	3	4	5	6	7	8	9	10

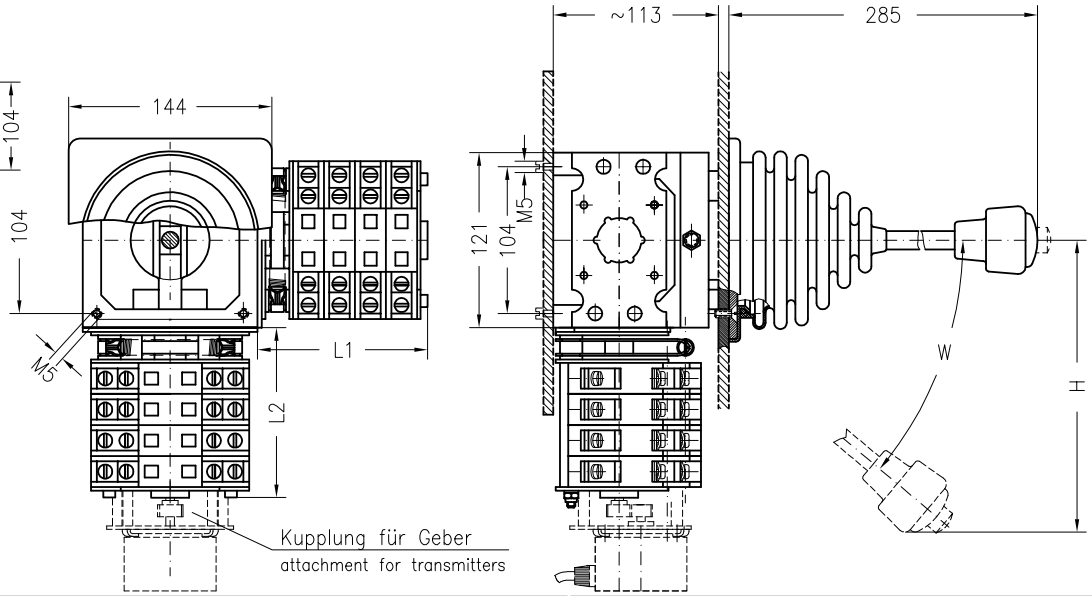
Bohrungen im Gehäusedeckel
bores at cover



Bohrungen in der Rückwand
bores at back board



Anordnung arrangement	VNS2-E(R)		VNS2--V(R)		VNS2--V(R)		Schalttrichtung switching direction	
	linke Hand left hand	rechte Hand right hand	linke Hand left hand	rechte Hand right hand	linke Hand left hand	rechte Hand right hand	linke Hand left hand	rechte Hand right hand
Blickrichtung view direction	N left	U right	N left	U right	U left	N right	1	5
Quer cross	U	N	Y	X	X	Y	3 ← L → 4	7 ← R → 8
							2	6



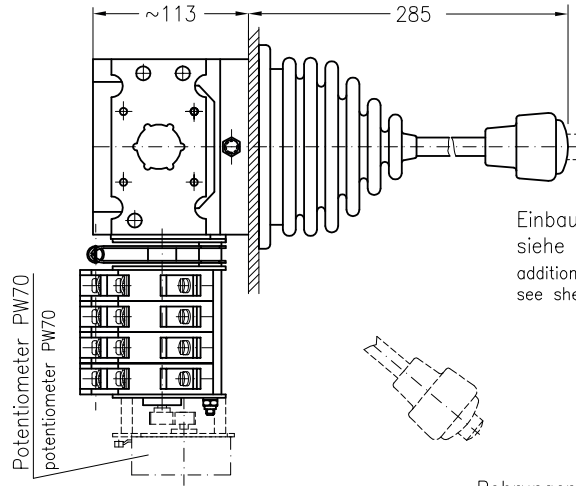
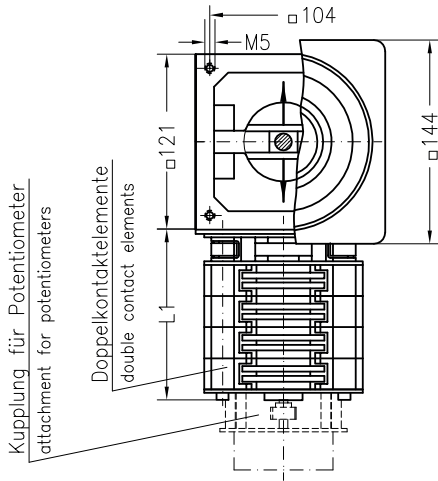
Anzahl Doppelkontakte number of double contacts		für Wechselstrom für Gleichstrom mit Blasing VNS2- VNSB2- for AC with permanent magnet for DC										Stellungen steps		H		W		Hebelaus Schlag Stellungen lever deflection		Stellungen steps		A		W					
L1	L2	1	2	3	4	5	6	7	8	9	10	1-0-1	2-0-2	120	200	20°	40°	3-0-3	4-0-4	162	200	30°	40°	5-0-5	6-0-6	200	200	40°	40°

Antriebsart: drive: Typ VNS(B)2 _T NE(R) type / L1 Zusatz bei Dauer- magnetblasing addition by permanent magnet Anzahl Doppelkontaktelemente number of double contact elements	V VNS(B)2 _T V(R) L1 L2	G VNS(B)2 _T G(R) L1	GG NS(B)2 _T GG(R) L1 L2
 Gewicht: Antriebsblock: 2,8 kg je Doppelkontakt: 0,4 kg weight: driver: 2,8 kg each double contact: 0,4 kg	 3 kg 0,4 kg	 3 kg 0,4 kg	 4,5 kg 0,4 kg
H VNS(B)2 _T H(R) L1 L2 4 kg 0,4 kg			

Typ **VNS2-F-G**
type

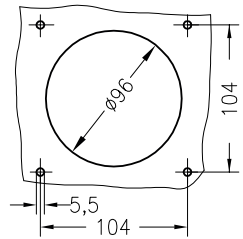
Antrieb G
siehe Seite J-VNS2-2/3
drive G
see sheet J-VNS2-2/3

Gewicht:
Antriebsblock ~3 kg
je Doppelkontakt ~0,4 kg
weight:
drive ~3 kg
each double contact ~0,4 kg



Einbauen im Hebel
siehe Seite G-...
additional in handle
see sheet G-...

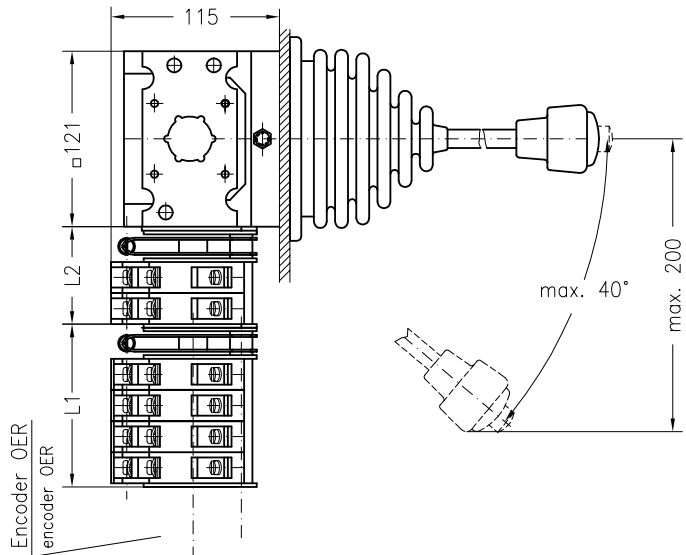
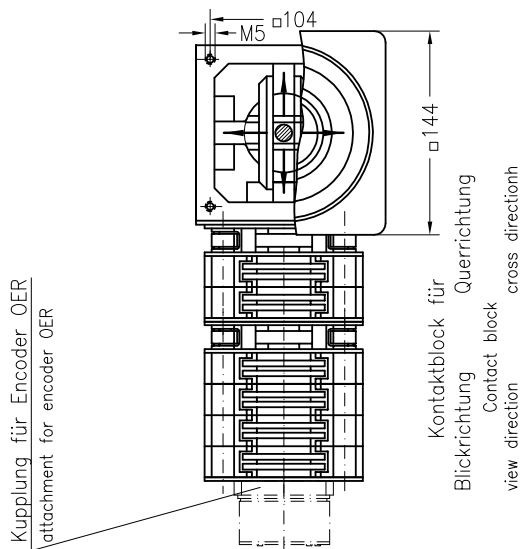
Bohrungen in der
Befestigungswand
mounting dimensions



Typ **VNS2--F-H**
type

Antrieb H
siehe Seite J-VNS2-2/3
drive H
see sheet J-VNS2-2/3

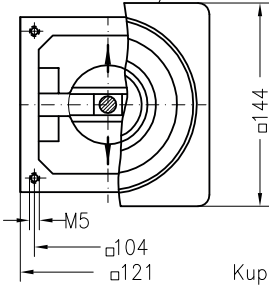
Gewicht:
Antriebsblock ~4 kg
je Doppelkontakt ~0,4 kg
weight:
drive ~4 kg
each double contact ~0,4 kg



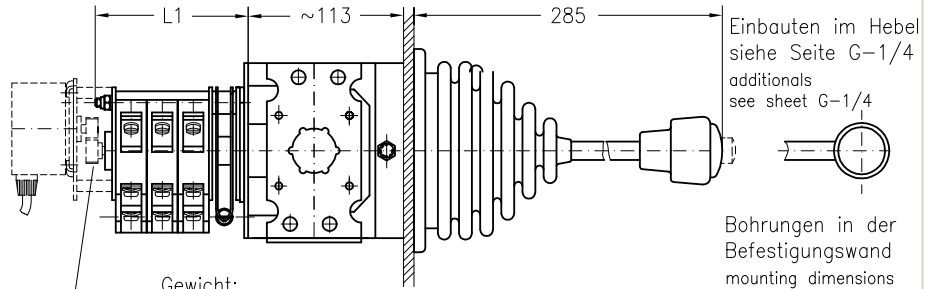
Anzahl Doppelkontakte number of double contacts	1	2	3	4	5	6	7	8	9	10
Maß L1 oder L2 dimension L1 or L2	58	80	102	124	146	168	190	212	234	256

Typ VNS2-A
type

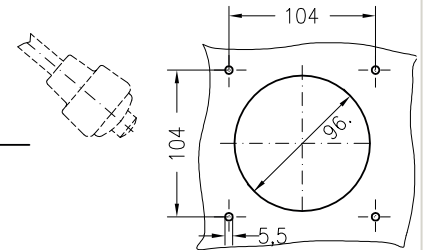
Antrieb A
siehe Seite J-VNS2-2/3
drive A
see sheet J-VNS2-2/3



Kupplung für Geber
attachment for transmitters

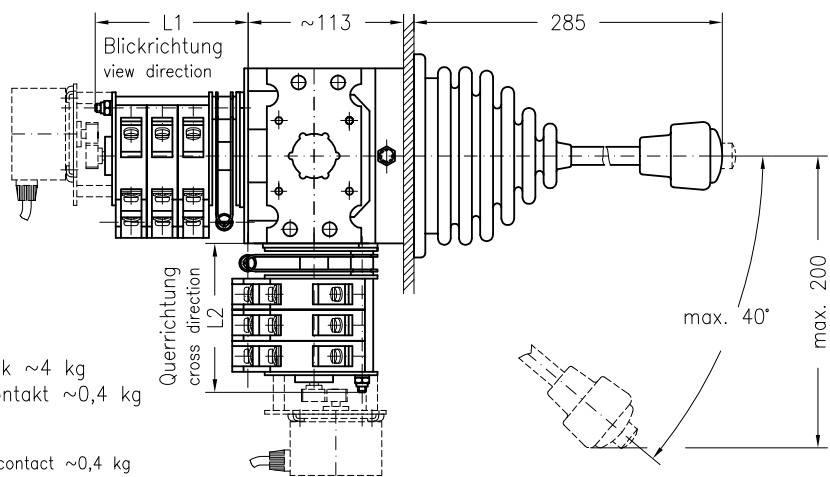
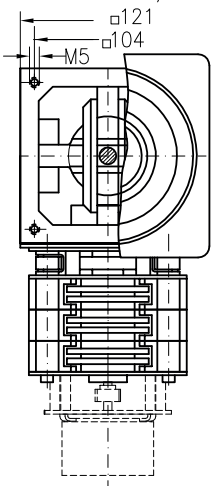


Gewicht:
Antriebsblock ~3,2kg
je Doppelkontakt ~0,4kg
weight:
drive ~3,2kg
each double contact ~0,4kg



Typ VNS2--EA
type

Antrieb EA
siehe Seite J-VNS2-2/3
drive EA
see sheet J-VNS2-2/3

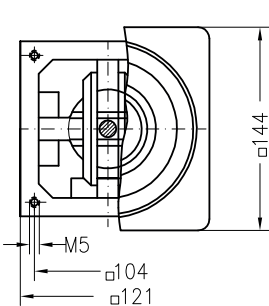


Gewicht:
Antriebsblock ~4 kg
je Doppelkontakt ~0,4 kg
weight:
drive ~4 kg
each double contact ~0,4 kg

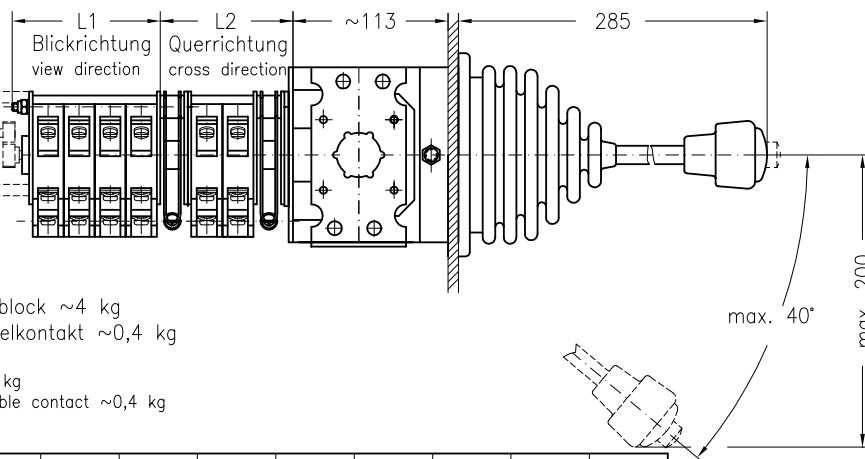
Typ VNS2--AA
type

Antrieb AA
drive AA

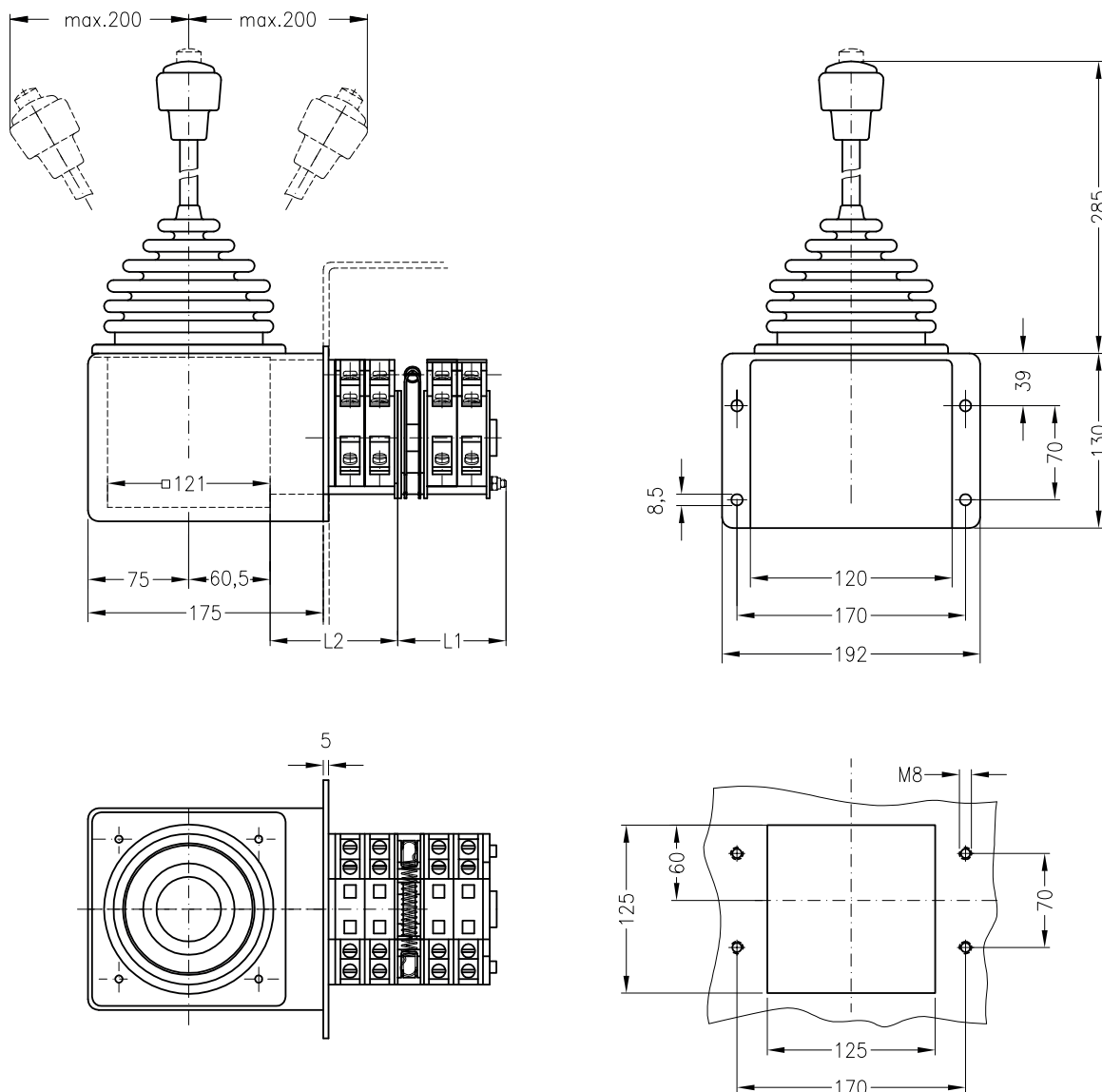
siehe Seite J-VNS2-2/3
see sheet J-VNS2-2/3



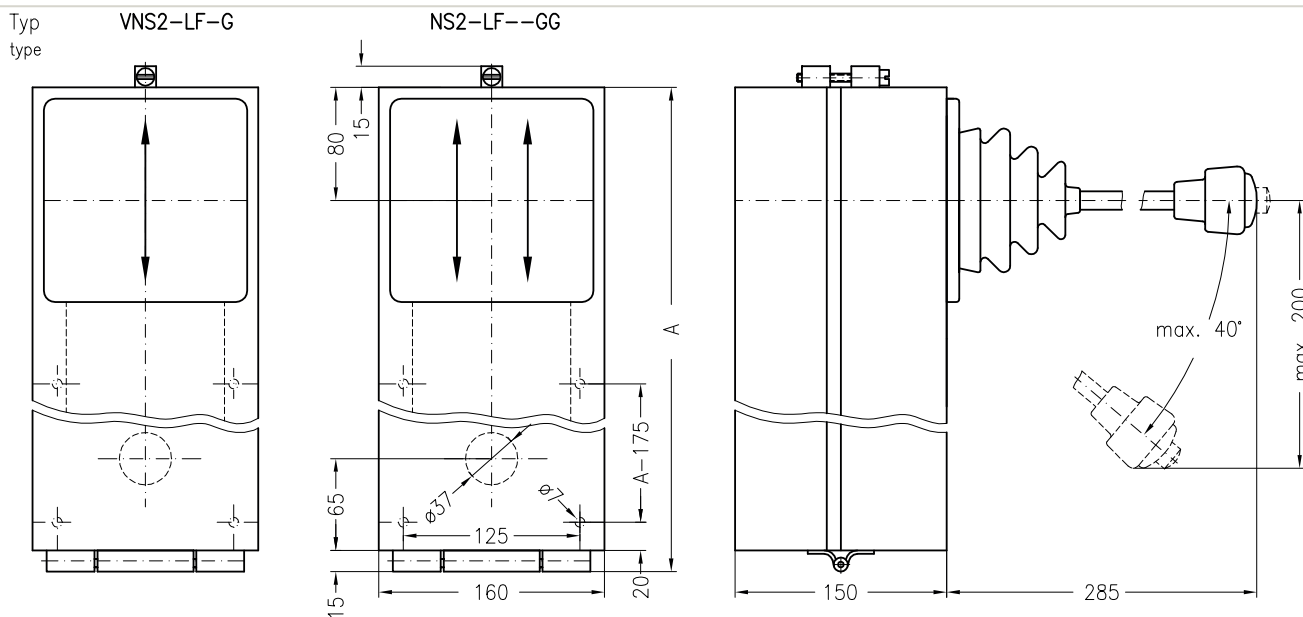
Gewicht:
Antriebsblock ~4 kg
je Doppelkontakt ~0,4 kg
weight:
drive ~4 kg
each double contact ~0,4 kg



Maß L1 oder L2 dimension L1 or L2	58	80	102	124	146	168	190	212	234	256
Anzahl Doppelkontakte number of double contacts	1	2	3	4	5	6	7	8	9	10



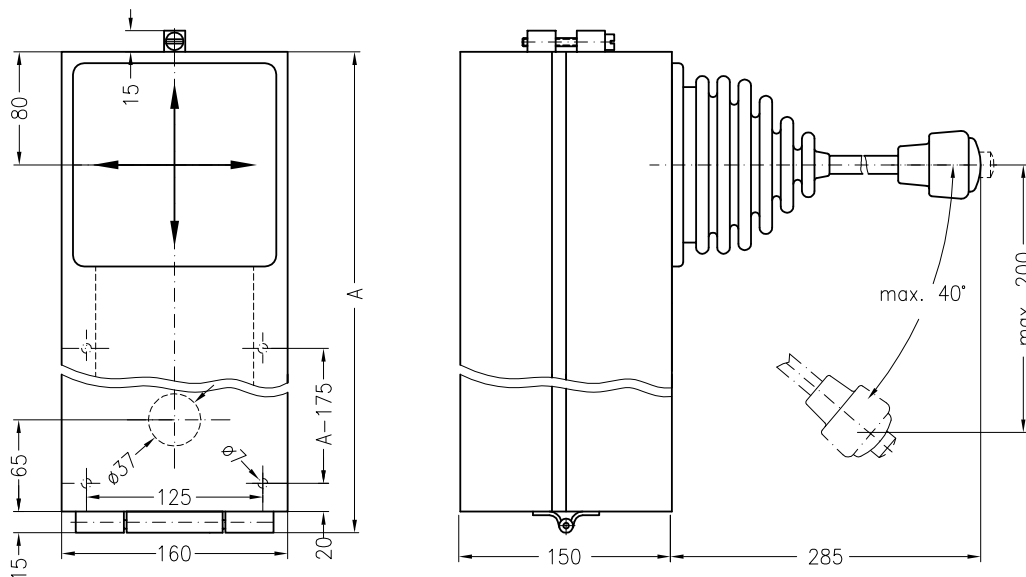
Anzahl Doppelkontakte number of double contact elements		für Wechselstrom für Gleichstrom mit Blasung					for AC with permanent magnet for DC			VNS2- VNSB2-											
		1	2	3	4	5	6	7	8	9	10										
L1 od. L2		58	80	102	124	146	168	190	212	234	256										
Antriebsart type of drive F. Norm Kontaktanschlüsse seitlich connections on the side	E VNS(B)2-KE(R)																				
	Gewicht:	weight:																			
	Antriebsblock:	drive:	4,7 kg					4,9 kg													
	je Doppelkontakt:	each double contact:	0,4 kg					0,4 kg													
			5,9 kg					6,4 kg													



Typ type	MAB A dim.	Gewicht weight	Schaltrichtung		switch direction	
			linke Hand left	rechte Hand right	linke Hand left	rechte Hand right
VNS26 LF-G	NS26 LF--GG	340	1	5	1 3	5 7
VNS29 LF-G	NS29 LF--GG	440	2	6	2 4	6 8
VNS214 LF-G	NS214 LF--GG	550				

Typ
type

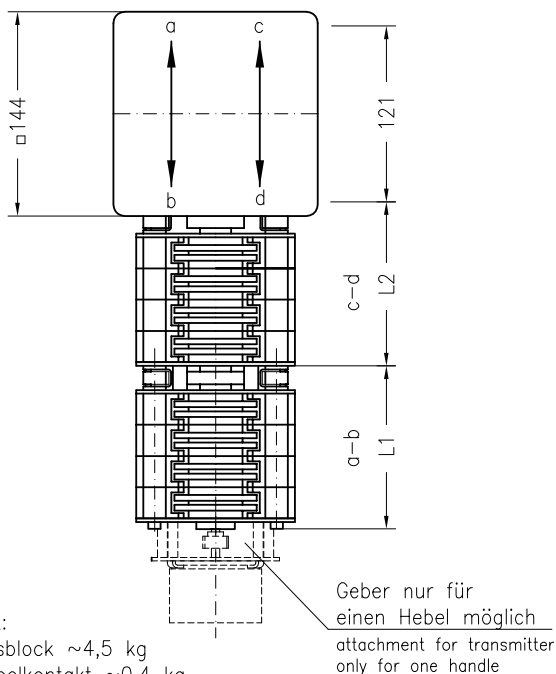
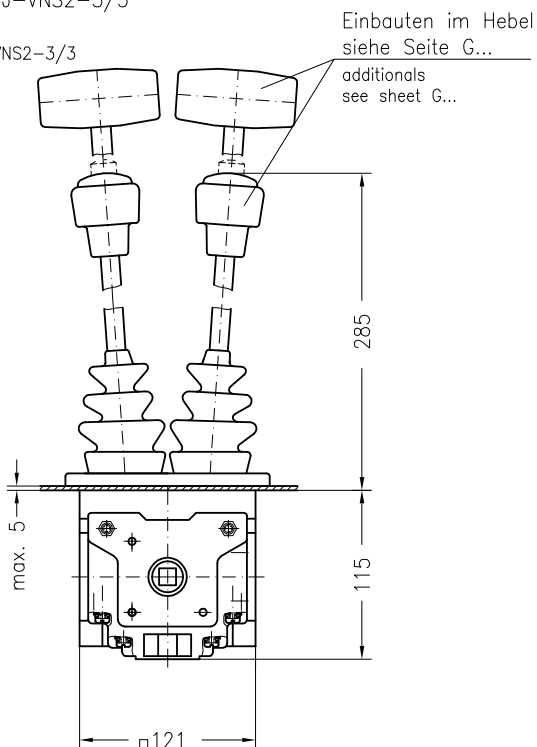
VNS2-L(F)--H
↑ ohne Typenzusatz F Bodenmontage



Typ type	MAB A dim.	Gewicht weight	Schaltrichtung		switch direction	
			linke Hand left	rechte Hand right	linke Hand left	rechte Hand right
VNS26 L(F)--H	340		1	5	1	5
VNS29 L(F)--H	440	12-16 kg	3	7	3 4	7 8
VNS214 L(F)--H	550		2	6	2	6

Typ VNS2--GGH

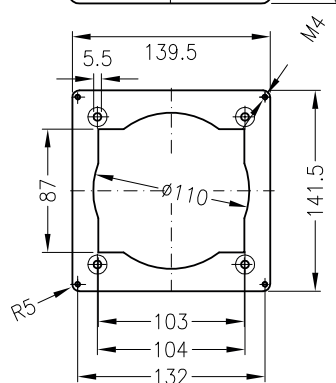
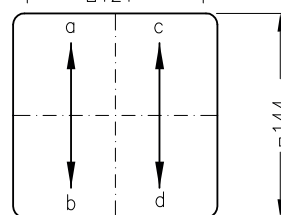
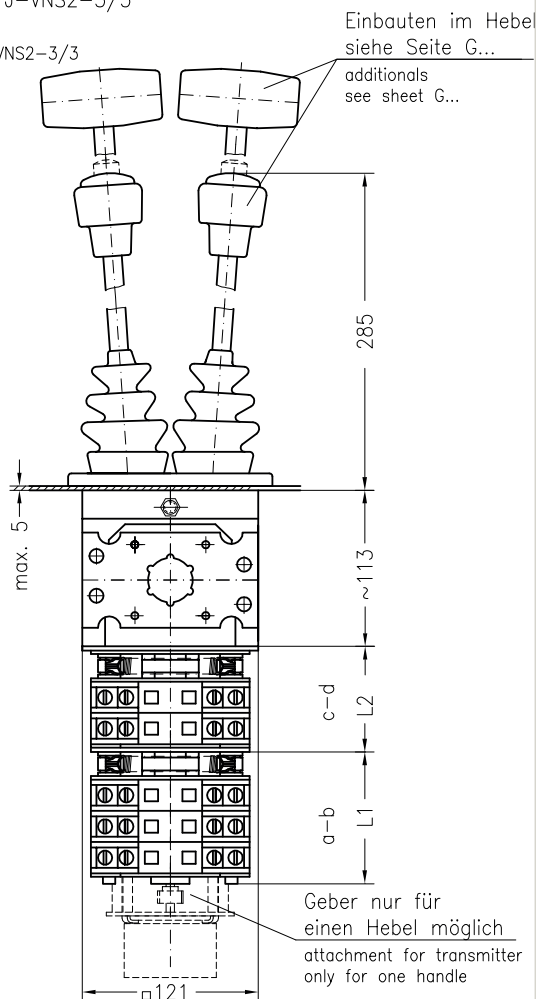
type
Antrieb GGH
siehe Seite J-VNS2-3/3
drive GGH
see sheet J-VNS2-3/3



Gewicht:
Antriebsblock ~4,5 kg
je Doppelkontakt ~0,4 kg
weight:
drive ~4,5 kg
each double contact ~0,4 kg

Typ VNS2--GGAA

type
Antrieb GGAA
siehe Seite J-VNS2-3/3
drive GGAA
see sheet J-VNS2-3/3



Bohrungen in der Befestigungswand nach NS275-GG mounting dimensions

Maß L1 oder L2 dimension L1 or L2	58	80	102	124	146	168	190	212	234	256
Anzahl Doppelkontakte number of double contacts	1	2	3	4	5	6	7	8	9	10

Typ VNS2--GGEA

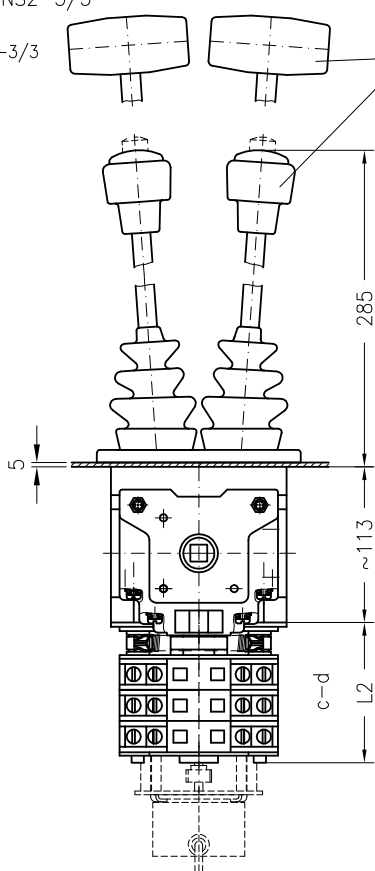
type

Antrieb GGEA

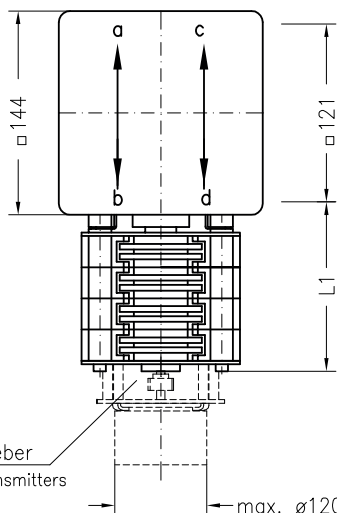
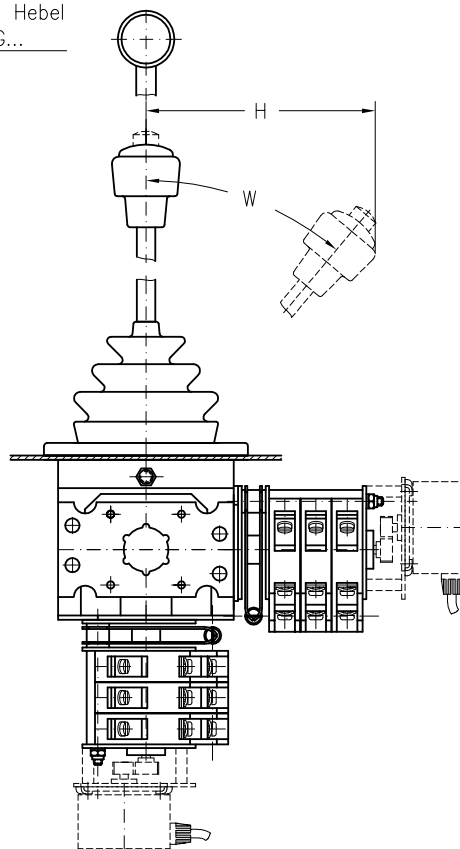
siehe Seite J-VNS2-3/3

drive GGEA

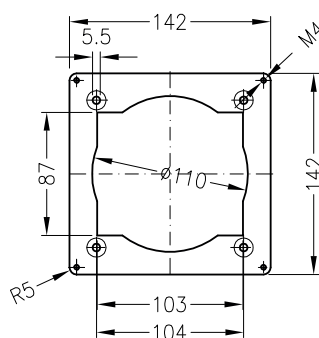
see sheet J-VNS2-3/3



Einbauen im Hebel
siehe Seite G...
additional
see sheet G...



Kupplung für Geber
attachment for transmitters



Bohrungen in der Befestigungswand nach NS275-GG mounting dimensions

Gewicht:

Antriebsblock ~4,5 kg

je Doppelkontakt ~0,4 kg

weight:

drive ~4,5 kg

each double contact ~0,4 kg

Bei 180 mm Hebel by level 180 mm			
Pos.	W	H	
1-0-1	20°	120	
2-0-2	40°	200	
3-0-3	30°	162	
4-0-4	40°	200	
5-0-5	40°	200	
6-0-6	40°	200	
7-0-7	40°	200	

Maß L1 oder L2 dimension L1 or L2	58	80	102	124	146	168	190	212	234	256		
Anzahl Doppelkontakte number of double contacts	1	2	3	4	5	6	7	8	9	10	7-0-7	200

